

Downton Abbey®

The Downstairs

FABRICS BY KATHY HALL



Confetti Garden Quilt Design:
Candy Hargrove

Quilt Size: **68" x 68"**

andoverfabrics.com



About The Downstairs

Based on the small prints that Mrs. Patmore, Daisy, Ivy, and other house staff wear. These are classic designs, and although they existed for some time prior, they became popular in the late 19th century. They're unassuming prints, which add a little color to what would otherwise be a life of uniformed servitude, which is otherwise so monochromatic. Tiny prints, little plaids, stripes. Not overly bold; the colors reflect the Downstairs lifestyle in that they have their own somewhat muted sensibility.

Downton™ and Downton Abbey®. ©2013
Carnival Film & Television Limited. All Rights Reserved.

andover : makower uk
The Henley Studio

Free Pattern Download Available

1384 Broadway New York, NY 10018
Tel. (800) 223-5678 • andoverfabrics.com



7597-B Fat 1/8 yd



7597-G Fat 1/8 yd



7597-R Fat 1/8 yd



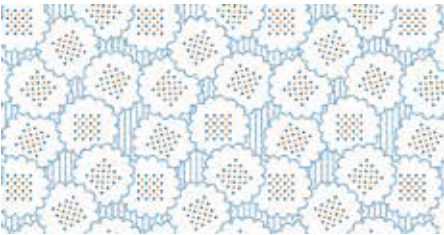
7598-B 3/8 yd



7598-N 3/8 yd



7598-R 3/8 yd



7600-B 3/8 yd



7600-R 3/8 yd



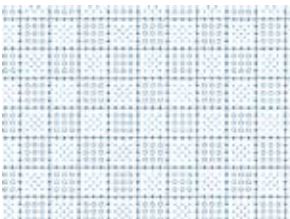
7601-B 3/8 yd



7601-G 3/8 yd



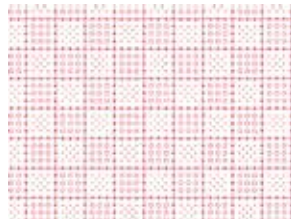
7601-R 3/8 yd



7602-B 3/8 yd



7602-K Fat 1/8 yd



7602-R 3/8 yd

FABRICS	5 KITS	10 KITS	20 KITS
7320-K	1	2	3
7332-B	1	2	3
From each	1	1	1
7597-B	7597-G	7597-R	7598-B
7598-N	7598-R	7600-B	7600-R
7601-B	7601-G	7601-R	7602-B
7602-K	7602-R	7326-B	7331-EB
7331-PK	7332-B1		

BACKING FABRIC

7317-N	2	4	7
--------	---	---	---

YARDAGE FOR BACKING: 4 1/2 YDS PER KIT

Fabrics shown are 50% of actual size.
All fabrics are used in quilt pattern.

*Blend with fabrics from
Downton Abbey®*



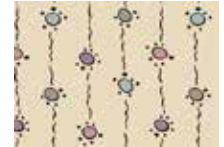
7320-K 2 yds



7326-B 5/8 yd (binding)



7331-EB Fat 1/8 yd



7331-PK Fat 1/8 yd



7332-B 2 yds



7332-B1 1/4 yd



7317-N 4 1/2 yds (backing)

Downton Abbey®

The Downstairs

FABRICS BY KATHY HALL

Downton™ and Downton Abbey®. ©2013
Carnival Film & Television Limited. All Rights Reserved.

andover : makower uk
The Hanley Studio

4/30/14